

# Company presentation

We speak machine.



# Who are we?

**We are Lead automation and we help companies to exploit their full potential.**

**What do we offer?**

- Comprehensive experience – we recognize weaknesses in the production and find appropriate solutions to achieve an optimal outcome.
- Long-term, sustainable and safe solutions – sustainability and safety are not wishful thinking but a day-to-day business for us.
- Customer satisfaction – we have reached our goal when you are completely satisfied that your business is safely benefitting from our automation solution.

**We speak machine.**



# Our services

We speak machine.



# Our basic services

## Planning



Planning of welding projects, designing of concepts and layouts, change management and its evaluation, business analysis. Coordination, care and maintenance also as a subcontractor.

## Mechanical assembly



Mechanical assembly of complex units, steel work, relocation and transfer of machines and system units.

## Online robot programming



Commissioning and functional programming of industrial robots (KUKA, ABB, FANUC a YASKAWA) directly at a production facility. Cycle time optimization, close cooperation with PLC and offline programmers.

## PLC programming



To our customers we offer highly skilled and experienced PLC programmers with extensive know-how inclusive of automation concepts in many different areas, such as automotive industry, logistics and manufacturing and food industries.

## Electrical engineering

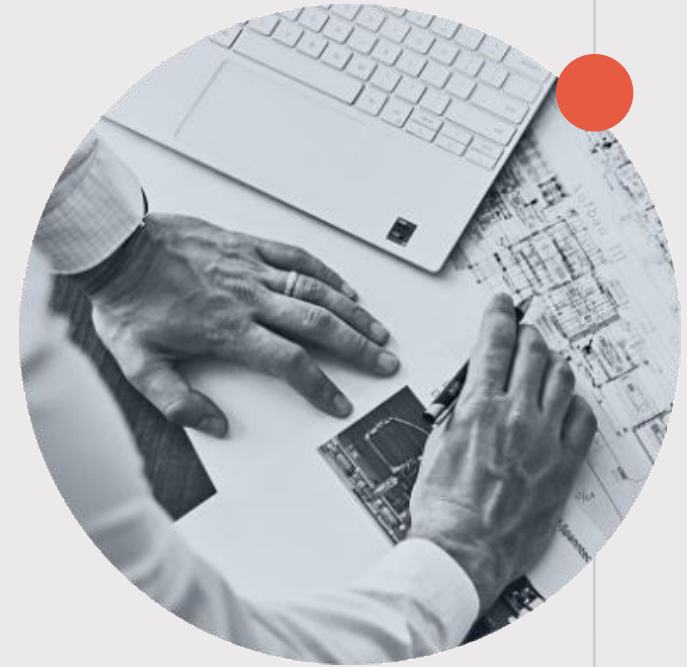


Both electrical engineering and commissioning require expert technicians. The electrical setup and installation is always carried out in a transparent and structured manner in accordance with valid standards and regulations.

# Planning from A to Z

**The most important thing in the operation is the precise analysis and planning of your production.**

- Before the start of a project, we plan your budget and discuss in advance all possible investment costs that may arise during the project. In this way, we can prepare you for all eventualities.
- We not only advise you on estimated costs but also develop a custom-made, security-based concept.
- We create a simulation of our proposed automated sequences to help you envision your company's prospects.



> 5 Projects



>4.000 h Yearly capacity



> 2 Employees

# Mechanical assembly

**Appropriate systems and machines are required to initiate the automation process.**

- Assembly and reconstruction of complete systems, relocation and transfer of machines and system units.
- Quick and easy implementation of the automation concept (assembly of steel construction, individual or complex units). Welding work and implementation of special modifications.



> 8 Projects



>16.000 h Yearly capacity



> 8 Employees

# Electrical engineering

**Insufficient documentation and improper implementation of electrotechnical solutions can't remain a closed book.**

Setup and installation of your systems and machines in a transparent and structured manner. We take care of these electrotechnical challenges for you:

- Hardware engineering (E-Plan P8, Auto CAD, SmartPlant)
- Control cabinet building
- Cable tray assembly, wiring of machines and equipment
- Testing and measuring according to current DIN and EN standards.



> 15 Projects



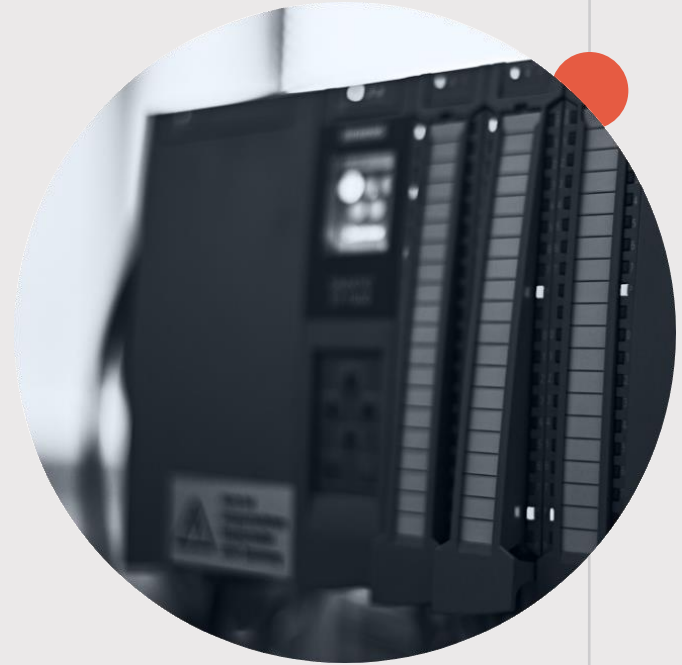
>20.000 h Yearly capacity



> 10 Employees

# Programmable logic controller

Programmable logic controllers play a crucial role in the development of an automation concept tailored to your needs.



- Project planning
- Documentation
- Hardware planning
- Software specifications
- Source code design
- Application of functions and client's wishes
- Functional test (E/A Check)
- Elimination of defects
- Software optimization
- Meeting customer's requirements
- Production support



> 20 Projects



>20.000 h Yearly capacity



> 10 Employees



# Robot programming

Robot can handle repetitive tasks in higher quantities and quality, it saves high operating costs and measurably increases the process efficiency.

Online programming – KUKA, FANUC, ABB, YASKAWA.

- Project planning
- Commissioning
- Teach-In process
- Cycle time optimization
- Safe operations
- Documentation



> 20 Projects



>10.000 h Yearly capacity



> 5 Employees



# Project completion

**We will be happy to take over the project and entire process for you. Your ideas and wishes will be delivered in a professional manner, on-time and as per your requirements.**

- The automation of your facility will be subjected to an approval test with the results noted in the Product Approval Record. A follow-up analysis then helps to determine whether the parameters of our initial efficiency calculation have been achieved or whether adjustments need to be made.
- Planning automation in the future? We offer assistance in database management enabling your business to efficiently record and monitor the progress of our integrated system.



# Maintenance and servicing

**With regular maintenance you prevent unexpected system failures which could potentially cost you an arm and a leg.**

- With our vast experience and specialist team, we can fulfill your company's production potential every step of the way. Our services are specially tailored to your needs inclusive of technical documentation.
- In addition to a regular maintenance, we also offer individual contracts, advice on logistics matters, quality management, modifications, error analysis and error search, as well as repair or general servicing.



# Reference selection



## VW Emden

Assembly of door painting production line  
Electrical installation of the entire system



## Tesla Berlin

Assembly line  
Electrical installation Trimm and Final Line



## KWD Automotive

ZSB Längsträger  
Software construction for two PLCs,  
commissioning of the production line (PLC and robotics)



## BMW Dingolfing

Assembly B-Deckel  
Hardware construction with  
EPLAN P8



## BMW Dingolfing

Assembly of sample cell E/E-Penthouse  
Overall electrical installation, switchboard  
construction, hardware and software construction  
electrical installation and commissioning



## VW Hannover

Integration of special vehicle production  
Hardware and software construction



## MAN NBG/SZ/BAN

Relocation of pipe production  
Planning



## Voestalpine Edelstahlwerk

Commissioning of ingot-cast production  
PCS7

and many others...

## Contact

Are you interested in cooperation with our company or do you require more information on our services? Contact us.



+421 910 323 353



info@lead-automation.eu



**Ing. Alex Rudi**  
CEO and founder



**Ing. Tivadar Solík, MBA**  
Project manager



**Mgr. Petra Varga Šipossová**  
Office and HR manager

**We speak machine.**

